

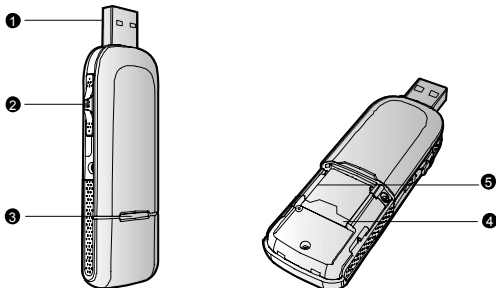
# Thank you for choosing Mobile Broadband E1820 USB Stick ( hereinafter referred to as the E1820). With E1820, you can access a wireless network at high speed.

## Note:

This manual describes the appearance of the E1820, as well as the procedures for preparation, installation, and removal. For operation details about the management program, see the online help included in the management program.

## Getting to Know Your E1820

The following figure shows the appearance of the E1820. It is provided only for your reference. The actual product may be different.



### 1 USB Connector

It connects the E1820 to a PC.

### 2 Slider

It extends or retracts the USB connector.

### 3 Indicator

It indicates the status of the E1820.

- Green, blinking twice every 3s: The E1820 is powered on.
- Green, blinking once every 3s: The E1820 is registering with a 2G network.
- Blue, blinking once every 3s: The E1820 is registering with a 3G/3G+ network.
- Green, solid: The E1820 is connected to a 2G network.
- Blue, solid: The E1820 is connected to a 3G network.
- Cyan, solid: The E1820 is connected to a 3G+ network.
- Off: The E1820 is removed.

### 4 SIM/USIM Card Slot

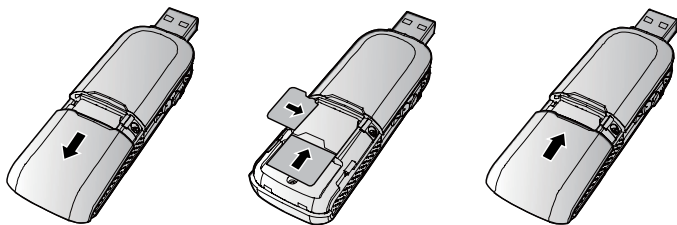
It holds a Subscriber Identity Module (SIM)/Universal Subscriber Identity Module (USIM) card.

### 5 microSD Card Slot

It holds a microSD card.

## Getting Your E1820 Ready

1. Slide the back cover to remove it from the E1820.
2. Insert the SIM/USIM card and the microSD card into the corresponding card slots, as shown in the following figure.
3. Replace the back cover and slide it into place.



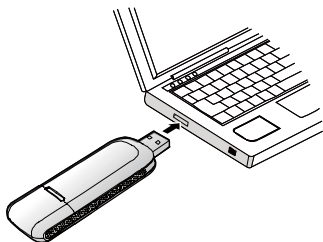
## Note:

- The microSD card is an optional accessory. If it is not provided in the package, you can buy one yourself.
- Ensure that the beveled edge of the SIM/USIM card is properly aligned with that of the SIM/USIM card slot and the microSD card is inserted according to the direction as labeled on the microSD card slot.
- Do not remove the microSD or SIM/USIM card when the card is in use. Otherwise, the card as well as your E1820 may get damaged and the data stored on the card may be corrupted.

## Installation/Removal Guide

The procedure for installing the management program depends on the operating system (OS) installed on your PC. The following sections take Windows XP as an example.

1. Plug the E1820 into the USB port of your PC.



2. The OS automatically detects and recognizes the new hardware and starts the installation wizard.

### Note:

If the auto-run program does not respond, find the AutoRun.exe file in the driver path. Then double-click AutoRun.exe to run the program.


3. Follow the on-screen instructions of the installation wizard.
4. After the program is installed, a shortcut icon for the management program appears on the desktop.

## Starting the Management Program

After being installed, the management program starts automatically. Then every time the E1820 is connected to the PC, the management program starts automatically.

You can also double-click the shortcut icon on the desktop to start the management program.

## Removing the E1820

1. Double-click  in the notification area. Then the **Unplug or Eject Hardware** dialog box appears.
2. Select the corresponding hardware and then click **Stop**.
3. When the message "**It is safe to remove the device**" appears, remove the E1820.

## Uninstalling the Management Program

1. Choose **Start > Control Panel > Add or Remove Programs**.
2. Find the management program and click **Remove** to uninstall the management program.

### Note:

Exit the management program before uninstalling it.